



**The 2025
Lady Milne Trophy
hosted by the
English Bridge Union**



Doubletree Hilton Bristol City Centre 11-13 April 2025 2025 Lady Milne Trophy

The English Bridge Union extends a very warm welcome to all the teams participating in the 2025 Lady Milne Trophy.

Officials:

Match Manager	Stuart King
Director in Charge	Sarah Amos
Assistant Directors	Christine MacFarlane

RealBridge Broadcasting Team

(Stuart King) and a cast of volunteers. Thanks also to Shireen Mohandes and Andy Bowles of RealBridge.

Refreshments

Refreshments for players and officials will be served in the Morningson Restaurant at the following times:

Friday	17:30 Buffet Meal
Saturday	14:35 Light Lunch 20:30 Dinner
Sunday	14:35 Light Lunch 20:00 Reception and Dinner (sit down 20:30)

Friday	17.30	Buffet meal		
	19.00–21.10	D v F	C v E	B v A
	21.25–23.35	D v F	C v E	B v A
Saturday	10.00–12.10	A v C	B v D	F v E
	12.25–14.35	A v C	B v D	F v E
	Lunch			
	15.20–17.30	E v A	F v B	C v D
	17.45–19.55	E v A	F v B	C v D
	20.30	Dinner (sit down at 20.30)		
Sunday	10.00–12.10	B v C	A v F	E v D
	12.25–14.35	B v C	A v F	E v D
	Lunch			
	15.20–17.30	F v C	E v B	D v A
	17.45–19.55	F v C	E v B	D v A
	20.30	Closing Dinner (sit down at 20.30)		

Team A:	Wales
Team B:	N Ireland
Team C:	England
Team D:	Scotland
Team E:	EBU
Team F:	Ireland

2025 LADY MILNE TROPHY

MATCH SCHEDULE

2025 LADY MILNE TROPHY				
Match Schedule				
		Table 1	Table 2	Table 3
FRIDAY				
17:30	Dinner			
19:00-21.10	Match 1A	Scotland v Ireland	England v EBU	N Ireland v Wales
21:25-23:35	Match 1B	Scotland v Ireland	England v EBU	N Ireland v Wales
SATURDAY				
10.00 - 12.10	Match 2A	Wales v England	N Ireland v Scotland	Ireland v EBU
12.25 - 14.35	Match 2B	Wales v England	N Ireland v Scotland	Ireland v EBU
14:35	Lunch			
15:20-17:30	Match 3A	EBU v Wales	Ireland v N Ireland	England v Scotland
17:45-19:55	Match 3B	EBU v Wales	Ireland v N Ireland	England v Scotland
20:30	Dinner (sit down at 8.30PM)			
SUNDAY				
10.00 - 12.10	Match 4A	N Ireland v England	Wales v Ireland	EBU v Scotland
12.25 - 14.35	Match 4B	N Ireland v England	Wales v Ireland	EBU v Scotland
14:35	Lunch			
15:20-17:30	Match 5A	Ireland v England	EBU v N Ireland	Scotland v Wales
17:45-19:55	Match 5B	Ireland v England	EBU v N Ireland	Scotland v Wales
20:30	Reception & Dinner			

Each team has its own table and seats its N/S Pair there throughout. The E/W Pairs move to the table of their opponents for each match. In the first stanza, the captain of the second-named team nominates their line-up first; in the second stanza the first-named captain nominates first.

THE LADY MILNE TROPHY

Format

The Lady Milne Trophy comprises six teams, the sixth team being fielded, in rotation, by the country hosting the event. In 2025 England fields two teams, one as “England” the other as “EBU”.

The competition sees five head-to-head matches of 32 boards in 16-board stanzas, the two teams from Ireland playing against each other in the first match.

Teams consist of a maximum of six players. Seating rights alternate between the two teams. In the first stanza the captain of the second-named team nominates their line-up first; in the second stanza the first-named captain nominates first.

Public Presentation

In any one session, three matches are in progress. The play will be broadcast on the internet via RealBridge. Entry to the Closed Room is prohibited.

Smoking and Alcohol

Please note that smoking is not permitted anywhere in the hotel. In addition, the consumption of alcohol is not permitted in the playing areas. This also applies to tournament staff. During a session no player may leave the playing area in order to smoke or consume alcohol.

Mobile Phones

Mobile phones and electronic devices capable of communication must be switched off in the playing area and be visible at the table at all times. Any player leaving the playing table prior to completion of the session must leave her mobile phone and electronic devices at the table. Spectators in the Vugraph theatre are requested to ensure that mobile phones are switched off. Any player or team official breaching this regulation will result in their team being fined an automatic penalty of 2VP.

Regulations for Open Room Spectators

You may watch the players live in the Open Room (Open Rooms will be clearly marked on the doors of each room) provided you observe the following rules:

- A spectator may not enter the Open Room while play is in progress. This also applies even if a match has started before the advertised starting time.
- If a spectator leaves the Open Room while play is in progress, they may not return until the play session (i.e. the match) has been completed.
- During play in the Open Room spectators must refrain from mannerisms or remarks and must not converse with a player or display any reaction to bidding or play.
- Spectators are permitted to observe the cards of one player only.
- A spectator should be seated behind a single player and may not get up to walk round the table or seek to look at the cards of any other player.
- Spectators are not permitted to sit where they can see the screen of the BBO operator covering the match on the internet.
- Spectators may not draw attention to any irregularity or mistake nor speak on any question except by request of the Director.
- The Director in Charge and/or the Match Manager is empowered to control the presence of spectators, individually or collectively.
- Under no circumstances may a member of the audience enter the Closed Room.



Wales

*Ceri Pierce & Mia Deschepper
Diane Kurbalija & Liz Commins
Gilly Clench & Suzi Lawson NPC
NPC Sophie Cunningham*

Ceri Pierce & Mia Deschepper

Ceri was horrified to realise at the weekend that she had been playing bridge for over 30 years (although that did include a 15-year break). She had not realised how old she was. She has played in numerous Lady Milne events since the 90s, this being her 6th with her partner Mia. Ceri is an IT consultant for a well-known company in Belfast, lives in Somerset (but is actually Welsh) and has three grown up children, Nick, Pete and Abbie who have all now flown her nest but come back from time to time with huge bags of washing. When not playing bridge, she can usually be found in an Indian restaurant.



Mia started playing bridge 9 years ago and was quickly hooked. She was so lucky to find much better players who helped her to develop. She has now represented Wales in the last five Lady Milnes with Ceri Pierce, in the European Mixed Teams with Adrian Thomas and Richard Plackett, and in the World Championships Mixed Teams also with Richard. Away from the bridge table, Mia is interested in just about anything bar watching sports, beach holidays, or fine dining.



Diane Kurbalija & Liz Commins

Diane has represented Wales on many occasions over the years, in Open, Mixed, Women's and Senior internationals. Many of these events were played with her much loved, greatly missed late

husband, Filip. More recently, she has played with Paul Denning in Mixed and Senior Internationals. She first played in the Lady Milne in 1988 with Ann Hirst; Wales won the trophy for the first time for many years. She last played in the Lady Milne, with Liz, in 2015, when Wales won the trophy again. A third win in 2025 would be very acceptable. At the moment, Diane spends most of her time sorting out her new house and garden and providing food and drink for her many extended family members whose ages range from 2 years (little Libby) to 94 years (lovely mum).



This is **Liz's** 6th Lady Milne appearance and her third playing with Diane. She was part of the team that won the trophy in 2015. Liz lives at home with her husband Peter and her two cats Tilly and Buster. Apart from playing bridge she enjoys spending time with her grandchildren, loves to travel and often travels far and wide to play various bridge events.



Gilly Clench & Suzi Lawson

Gilly has played in the Lady Milne for more years than she cares to remember and is going for the Guinness book of records on the number of different partners. When she was president of the WBU, Gilly pushed for eligibility requirements to be changed to allow Suzi to play with Welsh grandparents. Obviously, she plays with Gilly not her grandparents. :) Gilly is trying to grow old disgracefully and is succeeding.



This is **Suzy's** second appearance at the Lady Milne, as she lives in Bristol and wasn't allowed to play for Wales previously, only having Welsh grandparents, as noted above. She is renowned throughout the bridge community for having the longest hair and for sitting rather like a hobbit at the table, with knee positions that many of us can only dream about. She works in transport and her hobbies are playing bridge and cooking.



Sophie Cunningham (NPC)

This is **Sophie's** first time to Captain the team and says she isn't even going to attempt to fill Maggie's shoes! Sophie learnt bridge as a teenager but work and having her daughter meant competitive bridge took a back seat for many years. With the encouragement of Ceri Pierce and Laura Woodruff, Sophie is back playing competitive bridge and is loving it as much as she always did. When asked to captain the team, Sophie, a retired Head Teacher, thought managing a group of 6 women cannot be as difficult as a class of 30 seven year olds. Whether this is true remains to be seen!!



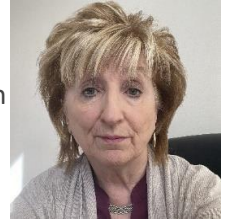


Northern Ireland

*Anne Fitzpatrick & Mary Kelly-Rogers
Helen Hall & Heather Hill
Sandie Millership & Anne Hassan
NPC Harold Curran*

Anne Fitzpatrick & Mary Kelly-Rogers

Anne has recently retired as a partner of an accountancy firm in Belfast. She is Hon. Treasurer of the NIBU and the IBU. She is very much looking forward to playing with Mary in their sixth Lady Milne together. When not at the bridge table Anne enjoys spending time with her children, grandchildren, line dancing and travelling.



Mary continues her work as a long-time supporter of Women's Bridge and is delighted to play Women's teams on the NIBU team for Lady Milne, this time in Bristol. Her interest and work for Women's Bridge goes back as far as 2009 when she was CBAI President and continued through her work on The EBL Women's Committee, instigating the role of Women's Bridge Coordinator (WBC) for each NBO in Europe and producing Women's Newsletters. Her work now continues on the WBF Women's Committee. The inaugural WBF Online Women's Teams on RealBridge was her brainchild and happily the second in January this year brought 74 teams together to compete and network for the future. Her goal is to have a Women's Bridge Coordinator (WBC) in every country in the World and believes that this goal is achievable.



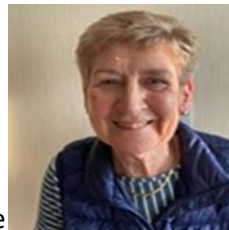
Mary is looking forward to playing with this Lady Milne NIBU team under the captaincy of Harold Curran and is delighted to have the opportunity to play again with one of her very best friends, Anne Fitzpatrick, believing that friendship through competition really does work!

Helen Hall & Heather Hill

Helen is a retired business owner who started her own software company in 1990. Helen is a qualified bridge teacher who has represented Northern Ireland in the Lady Milne on previous occasions. As International Match Manager and Webmaster, she devotes many hours to the NIBU.



Heather is a retired Maths teacher who keeps her hand in by working for the local exam board both as reviser and team leader for A level maths. She has played in a number of Lady Milnes and this is the first time with Helen. She has also represented Northern Ireland in the Teltscher Trophy. She enjoys travelling – in particular to visit her



grandchildren in Boise, Idaho and Newcastle upon Tyne. She and her husband Alan are just back from a three week trip to Vietnam and Cambodia. Time is also spent walking, practicing yoga and gardening.

Sandie Millership & Anne Hassan

Sandie is a retired Pharmacist living in Bangor. Sandie has been involved in junior bridge for more years than she cares to remember. She loves watching the youngsters' enthusiasm for the game but also gives thanks for permanent hair colours which disguise the grey hair that watching them produces. She has captained the junior teams many times and has also captained the Lady Milne team on a number of occasions. She also played in the inaugural Senior Camrose with her late husband, Jeff.



Anne is a retired teacher and mother to four children and ten grandchildren and has enjoyed bridge at club and local competition level for many years. This is her third time to participate in the Lady Milne event. Most of her bridge years were dedicated to the administrative and organisational side of game – holding posts of Secretary, Chair and Congress



Organiser of the NIBU, and recently teaching bridge in primary schools. Anne is passionate about bridge and its ability to change the lives of the people who have discovered and enjoy it at club level. Other hobbies include watercolour painting, gardening and a wee glass of wine!

Harold Curran (NPC)

Harold is a retired businessman living in Belfast and is currently President of the NIBU and Joint Honorary Secretary of the IBU. He has played for Ireland in the World Championships in 2016 and has been NPC for various teams but first time for Lady Milne. No longer sailing with big boats he now races model yachts for fun.





England

Dido Coley & Lily Kearney

Helen Erichsen & Fiona Brown

Jasmine Bakhshi & Heather Bakhshi

NPC David Burn

Dido Coley & Lily Kearney

Dido learnt to play bridge properly in late 2017 when she got introduced to the U16 squad via a friend at school, and hasn't looked back since. She has gone on to play at numerous European and World Youth Championships, the most recent of which yielded a bronze medal in the Pairs Championships with partner Lily Kearney. What she lacks in age, she makes up for with complicated system, protesting that it is "fun" or something. Outside of bridge, Dido is studying Classics at Cambridge and can often be found on the river Cam at some ungodly hour.



This is Lily's debut appearance at the Lady Milne, having learnt bridge in her sixth form after chess got boring. A theoretician at heart, she learnt to code by teaching her computer to play with her. Sadly, she hasn't been able to do the same with Dido. She has a knack for tricky end positions and has devoured many a bridge book, leading to many successful beer cards (KJ7 opposite xx anyone?). When not at the table, along with a penchant for competitive quizzing and Crocs, Lily spends her time studying for her Masters in Systems Biology at Cambridge



Helen Erichsen & Fiona Brown

I didn't start playing bridge until I was in my 30's which makes it difficult to progress beyond a certain point. I make up for this deficit with good system and great partners.

I've had some success playing with my husband Espen Erichsen. We won gold in the European Mixed Teams in 2005 and bronze in the BAM for the same event in 2023. I know some couples struggle to play together but I always think Espen is at his most handsome when he's just declared a tricky 3NT.



I've played with Fiona Brown for eight years. During that time we have been

selected to play for England ten times: six Lady Milnes and four international events. There have been many highs in our partnership but the two which stand out are winning bronze at the European Women's Pairs in 2023 and winning gold at the European Champions Cup in 2024. She is a brilliant bridge player and a very good friend.

When I'm not doing something bridge related I garden obsessively and write dark psychological thrillers. It's a good life.

Fiona was born in Darwin, Australia and started playing when she was 10 years old. She has been a fixture in the England women's team since 2010 and has partnered Helen for eight years. They recently won the Champions Cup by 1 imp! Fiona works in IT for Bettys and Taylors of Harrogate (or Yorkshire Tea, as they are better known). She lives in South Milford with her husband Paul and much-adored cat Calcifer.

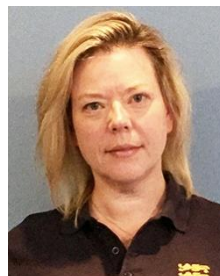


Jasmine Bakhshi & Heather Bakhshi

Jasmine started playing bridge at home in Fulham with her parents and brother, Liam. She progressed to playing on England junior teams, winning two Peggy Bayer Trophies in 2020 and 2021 and earning a bronze medal at the European Youth Team Championships in 2019. Also in 2019, Jasmine was delighted to win the WBF Joan Gerard U16 award aimed at rewarding aptitude, fair play, good sportsmanship and a friendly international spirit. The Lady Milne will be her first adult representative event. Jasmine currently attends the University of Exeter where she is reading clinical psychology. She is a supporter of Fulham Football Club attending as many home games as possible with her father.



Heather learned to play bridge in her thirties, hoping to have fun and meet interesting people. She met her husband, David, and together with Liam (age 25) and Jasmine (age 20), they have four players for family bridge. This is Heather's fourth Lady Milne and her first partnering Jasmine.



David Burn (NPC)

David was born in Bulawayo, in what was then Rhodesia, and moved to London in his early teens. After taking early retirement from his IT career he became a fixture in both the national and sponsored teams of the 2000s, playing in seven Camrose matches, one European Championships and one World Olympiad; and coached Britain to silver in the Bermuda Bowl (1987) and victory in the European championships (1991). He has coached the highly successful England Women's team over recent years, picking up numerous medals including gold in the 2016 European Championships and silver in the 2013 and 2017 Venice Cups. He is a popular bridge journalist, writing his own columns and ghost writing for more famous people. His other interests include reading, classical music, going to the theatre, and enjoying beer and curry. He lives in London with his wife, Frances, and a cat called Christopher Marlowe.





Scotland

Julia Palmer & Fiona Greenwood

Liz McGowan & Fiona McQuaker

Sheila Adamson & Abi Milne

NPC Brian Short

Julia Palmer & Fiona Greenwood

Julia lives and plays bridge in Edinburgh. This is her third outing playing in the Lady Milne, and has also been fortunate enough to partner Fiona in the Euros and Venice Cup. Julia is an established bridge teacher, focusing on improvers/new players. She teaches regularly in the New Melville Bridge Club Bridge Academy in Edinburgh, but has also been called upon to deliver seminars for clubs further afield, and has led several online seminars for the Scottish Bridge Union.



Fiona is English by birth but Scottish by choice having decided to move to Edinburgh 24 years ago. At that point, knowing nobody, she decided to join a bridge club and a hillwalking club. Both paid dividends - she climbed her final Munro in 2017 and gained her first Scottish cap playing in the Lady Milne in 2020. She has been building a partnership with Julia for the last 6 years. Their first caps as a partnership were when they were called up to play in the Venice Cup in Salsomaggiore in 2022 for which the team had only 3 weeks notice. A baptism of fire for sure but they nevertheless contributed to a top half finish.



Liz McGowan & Fiona McQuaker

Liz is Scotland's only World and European Grand Master, thanks to a purple patch when she played for Great Britain before the home nations were granted separate status. She won two European Women's Championships playing with Heather Dhondy; and the inaugural World Transnational Teams playing with some great Icelanders she and Heather picked up in the bar.

She has also won 2 silver medals at World Team Olympiads playing with Sandra Penfold. She has played in a record 38 Lady Milnes, winning 11 of them, also 7 Camrose series and 6 Teltscher Trophies, winning two. Liz is a bridge teacher and journalist, heavily involved with bridge administration in Scotland and she is currently the SBU representative on BGB.



Fiona has played for Scotland in the women's team on many occasions, and this will be her 22nd Lady Milne, winning on 6 occasions. She has played in the Scottish women's team in seven European Championships, and four Olympiads/World Games. With several others in this team she reached the semi-final of the World Games in Wroclaw in 2016 and the Venice Cup in Wuhan in 2019. She returned to face-to-face bridge after 2 years, at the SBU Peebles congress teams in March 2022, and this

was quickly followed by another Scottish cap at the Venice Cup in Salsomaggiore for which the team had only three weeks' notice; they nevertheless produced a top half finish. She is a chartered accountant working in Edinburgh, and enjoys travelling, theatre going and walking, and is also displaying considerable skills at fantasy football.



Sheila Adamson & Abi Milne

Sheila has been a frequent member of the Scottish Women's Team since 2004, originally playing with Anne Symons and more recently Abi Milne. In that time she has won six Lady Milne events. She has also played in 8 European Championships and World Bridge Games. Sheila's job involves quality assurance in transnational education, which means working with very nice people and attending a lot of committees. She used to spend a lot of time in airports; now she spends a lot of time on Microsoft Teams.



Abi is a recent addition to the Ladies' scene, having left the ranks of the Juniors in 2018 in an attempt to emulate the better known members of the Scotland Ladies ranks. As it so happened, she managed to do so at the first attempt with her current partner Sheila, and was therefore part of the winning Lady Milne team on her debut. At that time she was still playing under her maiden name, so celebrated shortly after by adopting the Milne name by marrying Jake. Abi has a very good temperament for the game, so don't try to ruffle her at the table. You will just be wasting your time! Abi is a systems analyst by day, keen writer by night and now an accomplished bridge player in the space between.



Brian Short (NPC)

Brian played bridge for Great Britain with long-time partner Sandy Duncan on 3 occasions before Scotland got international autonomy, winning Bronze in the 1977 Common Market championships. He has played in 55 Camrose weekends with five different partners, winning on three occasions. He has also played 7 times in the senior Camrose and has made multiple European and Olympiad appearances in Open, Senior and Mixed events.



He has captained or coached the Scottish womens' team on 16 occasions. At least he thinks it is 16. "My mind is a bit numb now", he explained recently, declining to offer a view on why it was numb. He won the Gold Cup in 2006 and has multiple wins in every major Scottish event, including Scotland's premier teams' competition (the Scottish Cup) which he has won on 15 occasions. Two sons, a daughter and six grandchildren keep him busy and as elder son lives in Melbourne and younger son in Switzerland, Kate and he have plenty of excuse to travel.



EBU

*Sally & Venetia Anoyrkatis
Claire Robinson & Hanna Tuus
Anne Rosen & Nevena Senior
NPC Sally Brock*

Sally Anoyrkatis & Venetia Anoyrkatis

Having played more competitively in the long distant past, I spend far more time teaching bridge nowadays than I do playing. However, it's always great to play with my daughter, Venetia, and we particularly both love playing in the Lady Milne. I'm looking forward to seeing old friends.



I'm 18 years old and come from a bridge playing family now living in Devon. As well as playing junior bridge I enjoy playing with my Mum, the highlight being the Lady Milne. This year is particularly busy with A levels coming up, but I really didn't want to miss out on playing - especially as the competition is going to be tough all round but we're hoping to pull off a hat trick!



Claire Robinson & Hanna Tuus

I am thrilled to be playing my fourth LM this year with my new partner Hanna. I'm originally from Newcastle and a Geordie at heart, but I've lived in London for many years. In 2020, I gave up my role as Head of Maths in a large London prep school to tutor online - Maths and bridge. I now have a free and easy life with a lot more time to play bridge. I have recently persuaded my mum to have a go and learn the game. She is now an avid BBO watcher whenever I am playing. On home turf, I've had a number of bridge successes having won both the prestigious summer and Easter congresses with different partners and the National Inter-Club Knockout event in recent years. I am also the Squad Leader of the U26 women in England and work hard to develop our juniors. It's great to see so many representing England in this year's Lady Milne. My bridge ambitions are not yet fulfilled



though; I'd love to represent England at European or World level and I'm still hoping my day will come. When not playing bridge, I play poker (Las Vegas is my favourite place in the world) and I love to swim fast, play tennis and cook healthy food. I have recently got into board gaming, my favourite games being Quacks of Quedlinberg and Castles of Burgundy. My favourite food is ramen.

Hanna grew up in Estonia where she started playing at the school bridge club at the age of 16. She moved to the UK for university and debuted on the England U26W team at the 2017 European Championships. She now lives in London, tactically close to the Young Chelsea. Away from the table, Hanna is a data scientist and enjoys lifting. This Lady Milne is her first non-junior appearance for England.



Anne Rosen & Nevena Senior

Anne learnt to play bridge in her teens in Edinburgh in the 1980s, where she played for the Scottish Junior team and won the Ladies teams, before moving south aged 22. After qualifying as a Chartered Accountant Anne moved to London to be with her now husband, Neil Rosen. Away from the table Anne works for the Bank of England but is now looking forward to retiring as soon as she can. Over the years Anne has had considerable success in national competitions including the Pachabo, Tollemache, Hubert Phillips and NICKO. Internationally Anne has played representative bridge with Val Curran, Gillian Fawcett, Catherine Draper, Catherine Seale, Sarah Bell, and Nevena Senior. Anne was also part of the team that won the Mind Sport Games in Beijing in 2008. This is Anne's 10th Lady Milne and 3rd playing with Nevena.



I started playing bridge during my final year at University, and my first husband introduced me to the game. I teach and play bridge both on line and face-to-face-the latter in London at Andrew Robson's BC, Wimbledon BC and the Acol club. I've won multiple medals from European and World Championships, representing Bulgaria, Great Britain and England. My best achievements are winning the European Ladies Pairs for Bulgaria in 1987, winning the European Women's Teams for England in 2012 and 2016 and winning the World Bridge Games in 2008 and 2012 again for England. In my free time I like reading, doing crosswords, going to the gym and cooking.



Sally Brock (NPC)

Back in the day (1979 to be precise) I played in my first European Championship, with Sandra Landy, which we won. And we won again in 1981 and also the Venice Cup that year. Between then and now I have played in and won a lot of women's and domestic open events, including another five world championships.



Nowadays I make my living mostly by professional bridge of one sort or another: writing (I am the columnist for the Sunday Times), playing and teaching online – trying to share my passion (obsession maybe!) for the game with others!



Ireland

*Joan Kenny & Jeannie Fitzgerald
Teresa Rigney & Siobhan Part
Louise Mitchell & Lucy Phelan
NPC Paul Porteous*

Joan Kenny & Jeannie Fitzgerald

Joan is a retired Maths teacher from Ballinrobe, County Mayo, who would still be very happy to “pull a pint” for any visitors to Galway in the family licensed premises – thus doing her bit for the returning diaspora! Joan is a veteran of many previous Lady Milne teams, the majority in partnership with Teresa Rigney, and three times previously with this year’s partner, and has also played on numerous European and World Championship teams.



Jeannie, living in Ennis, County Clare, is involved in technology research and development, having completed a PhD in computer science as a mature student in the University of Limerick. She has won many representative caps in the Lady Milne, and at European and World level. She and Joan have featured in the Lady Milne three times previously, and represented Ireland in the European National Teams Championship in Denmark in 2024.



Teresa Rigney & Siobhan Part

Teresa is retired after a long career as a teacher of Mathematics at a Dublin secondary school for young ladies. With retirement has come a greater facility to relax, so detention for those who don’t know their system is no longer on the cards! Teresa has won multiple national championships, and has represented Ireland on numerous occasions in the Lady Milne and in European and World Championship teams. She too was part of the European National Teams Championship team in Denmark.



Siobhan is from Kildare, just outside Dublin, and works as a nurse in a large Dublin teaching hospital. She learned to play bridge in school and played for three years before taking a break. She returned to bridge seriously just over ten years ago and has played with Teresa Rigney & BJ O'Brien since, learning good habits (mostly – certainly from Teresa!), and progressing rapidly through the ranks. This is Siobhan's fourth Lady Milne outing.



Louise Mitchell & Lucy Phelan

Louise returned to her native Galway after a 15-year stint in Limerick, with her bridge-playing TD husband in tow. Outside her day job, as an auditor with Revenue, free time is spent mainly at the bridge table or planning her next holiday! One of the few Irish women to have played in the Camrose series, winning her first cap in 2013 with partner Lucy Phelan, Louise has represented Ireland in the European and World Championships. This is Louise's fourth Lady Milne appearance.



The pride of Waterford, **Lucy** has won most of the Irish national titles, many of them in partnership with her husband, John. Together, they have represented the CBAI in the Camrose Trophy, while Lucy has played for Ireland in the Lady Milne on several occasions, and they have travelled to various open championships, where they have represented Ireland with some distinction. In addition, Lucy is a well-known and popular bridge teacher.



Paul Porteous (NPC)

Paul is the former CEO of the CBAI, a position he held for the best part of thirty years. Since retirement, he has enjoyed travelling and working on his garden, but continues to be very involved in the Irish bridge scene. Paul has represented Ireland on Junior (long, long ago!) and Mixed Teams at European events, and last year made his first Senior international appearance in the Teltscher Trophy. He is an experienced NPC, having performed that role on Lady Milne and Irish Women's Teams at European level and with both Open & Senior teams at home internationals.



VP SCALE (32 BOARDS)

IMPS	VPs	IMPS	VPs	IMPS	VPs
0	10.00- 10.00	29	15.10-4.90	58	18.21 -1.79
1	10.22 - 9.78	30	15.24-4.76	59	18.29 -1.71
2	10.44 - 9.56	31	15.37 -4.63	60	18.37 -1.63
3	10.65- 9.35	32	15.50-4.50	61	18.45-1.55
4	10.86-9.14	33	15.63-4.37	62	18.53-1.47
5	11.07 -8.93	34	15.76-4.24	63	18.61 -1.39
6	11.27- 8.73	35	15.88-4.12	64	18.69 -1.31
7	11.47 -8.53	36	16.00 - 4.00	65	18.76 -1.24
8	11.67- 8.33	37	16.12- 3.88	66	18.83 -1.17
9	11.86-8.14	38	16.24- 3.76	67	18.90-1.10
10	12.05-7.95	39	16.35 - 3.65	68	18.97-1.03
11	12.24- 7.76	40	16.46 - 3.54	69	19.04 -0.96
12	12.42- 7.58	41	16.57 - 3.43	70	19.11 -0.89
13	12.60- 7.40	42	16.68- 3.32	71	19.18 -0.82
14	12.78- 7.22	43	16.79 - 3.21	72	19.25- 0.75
15	12.95-7.05	44	16.90-3.10	73	19.32 -0.68
16	13.12-6.88	45	17.01 - 2.99	74	19.38- 0.62
17	13.29 - 6.71	46	17.11 - 2.89	75	19.44 -0.56
18	13.46- 6.54	47	17.21 - 2.79	76	19.50- 0.50
19	13.62 - 6.38	48	17.31 - 2.69	77	19.56 -0.44
20	13.78 - 6.22	49	17.41 - 2.59	78	19.62 -0.38
21	13.94 - 6.06	50	17.51 - 2.49	79	19.68- 0.32
22	14.09 - 5.91	51	17.60- 2.40	80	19.74 -0.26
23	14.24 - 5.76	52	17.69- 2.31	81	19.80- 0.20
24	14.39 - 5.61	53	17.78- 2.22	82	19.85-0.15
25	14.54 - 5.46	54	17.87 - 2.13	83	19.90-0.10
26	14.68- 5.32	55	17.96- 2.04	84	19.95 -0.05
27	14.82- 5.18	56	18.05 - 1.95		
28	14.96 - 5.04	57	18.13-1.87		

International Match Point Scale

Points difference	IMPs
0 - 10	= 0
20 - 40	= 1
50 - 80	= 2
90 - 120	= 3
130 - 160	= 4
170 - 210	= 5
220 - 260	= 6
270 - 310	= 7
320 - 360	= 8
370 - 420	= 9
430 - 490	= 10
500 - 590	= 11
600 - 740	= 12

Points difference	IMPs
750 - 890	= 13
900 - 1090	= 14
1100 - 1290	= 15
1300 - 1490	= 16
1500 - 1740	= 17
1750 - 1990	= 18
2000 - 2240	= 19
2250 - 2490	= 20
2500 - 2990	= 21
3000 - 3490	= 22
3500 - 3990	= 23
4000 and above	= 24