

This is still an 'in competition' situation, hence the 3♦ bid is a fit-jump.

Fit-jumps vs Splinter Debate

There will be occasions when you need to decide whether a bid is a fit-jump or a splinter. For example:

Oppo 1 Partner Oppo 2 You
 1♥ 2♦ 2♥ 4♣

I recommend that you should *always* have a fit-jump available so here 4♣ would indeed be a fit-jump and *not* a splinter. Contrast this with the following auctions:

Oppo 1 Partner Oppo 2 You
 1♣ 1♥ Pass 3♦

Oppo 1 Partner Oppo 2 You
 1♣ 1♥ Pass 4♦

3♦ in the first auction is a fit-jump, whereas in the second 4♦ is a splinter. *So a jump to the four level is only a splinter if a fit-jump was available at a lower level.*

In summary the use of fit-jumps in competition will improve your partnership bidding and judgment immensely. They allow real discussion between two partners rather than just blithely guessing then often being forced to 're-guess' later.

One example hand from real life:

Love All. Dealer North.

♠ 8			
♥ K Q 7 4			
♦ A J 8 6 5			
♣ A 7 2			
♠ K 10 6 3			♠ A Q 7 5 4
♥ 9 6			♥ 3
♦ Q 4			♦ K 9 7 2
♣ K J 10 8 3			♣ Q 9 5
			♠ J 9 2
			♥ A J 10 8 5 2
			♦ 10 3
			♣ 6 4

West	North	East	South
	1♦	1♠	Dble
3♣ ¹	4♥	4♠	All Pass

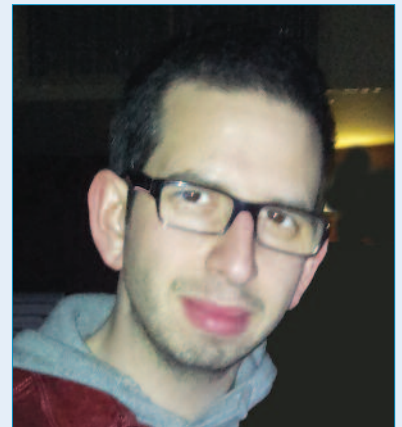
¹ Fit-jump

Despite holding only 11 HCPs East has an easy (and successful) 4♠ bid. This is partly helped by the singleton heart but also the key fitting club honour, allowing 4♠ to be bid over the making 4♥ contract. □

Top Table

Ben Green

BEN GREEN was extremely successful as a junior player, and repeatedly represented England in international events. His most recent success on the national scene was winning the 2013 Premier Grand Masters Pairs with John Holland. Ben was the Coach of the England Open Team that came fourth at the 2012 European Championships, and will fulfil that role again at this year's Bermuda Bowl.



When did you start playing bridge?

Grandma taught me on a family holiday when I was 12, but it wasn't until three years later that I first went to a bridge club; I played with anybody and everybody, week in week out, and gradually improved.

How often / where do you play?

A couple of times a week at the Acol Bridge Club in London; I also practise on BBO twice a week with my regular partner, John Holland.

Do you always play with the same partners / team-mates? What do you expect of them?

I play with a variety of partners and team-mates. I expect them to try their best – that's all that one can ask for.

What do you do for a living?

Management consultant and bridge professional.

What are your favourite bridge books?

The Expert Game (Terence Reese), *Why You Lose at Bridge* (S.J. Simon), *Bridge with the Blue Team* (Pietro Forquet) – all classics.

What are your hobbies?

Cooking, playing badminton, exploring London (I have only recently moved there), swimming, going out with friends.

What do you like and what would you change in bridge?

I love bridge, I wouldn't change the game at all. I enjoy the pressure, especially in World and European Championships.

What's the bridge success (so far) closest to your heart?

Winning the 2012 Spring Foursomes, coming back from a long way down to win on extra boards. Before that, reaching the Gold Cup final in 2007.

NGS NEWS



Photo: Peter Hasenson

TOP OF the Juniors in the National Grading Scheme, currently an 'Ace of Spades' with a grade of 68.61, is Shivam Shah. He has played remarkably few boards in rated events, approximately 1100, so his grade is only just 'mature'. Most of these events are EBU ones and Shivam has played in them with various partners, consistently achieving good results.

For the latest developments in the NGS, see Barry Capal's Blog on the website. Type <http://goo.gl/WTKpv> into your browser.